

MEADOWBROOK SUBDIVISION

Built by
Breault Homes
Building dreams one home at a time

In Association
with



STANDARD FEATURES:

Energy Savings Features

90+Comfortmaker® Furnace
JeldWen® Windows Single Hung Tilt-In
Energy Efficient R-38 Attic Insulation
Quick Recovery Hot Water Heater
Fully Insulated Entry Door
Pre-Insulation Energy Seal

Construction Features

Distinctive Architectural Plans
Glue and Screwed Sub-Floors
Wood and Concrete Construction
Quality Framed Construction
Prepared for Gas Dryer w/Vent
Plug for Garage Door Opener
10 year Basement Water-Proofing

Community Features

Protective Restrictive Covenants –Annual Dues
Underground Utilities
City Water and Sewer
Close Proximity to Schools/Shopping/Freeways
Community Street Lights-Sidewalks-Play Ground
Milan School District, Washtenaw County, MI

Kitchen Features

Hardwood Cabinets Selection Interior A or B
Granite Countertops
Under-mount Double Bowl Stainless Steel Sink
Delta® Faucet with Spray
G.E.® Range Hood
G.E.® Dishwasher
Prepared for Gas Range

Breault Homes

Danielle Grostick

(734)637-5897
Grostick14@aol.com

MEADOWBROOK SUBDIVISION

Built by
Breault Homes
Building dreams one home at a time

In Association
with



STANDARD FEATURES CONTINUED:

Interior Features

Electric Door Chimes
Protective Smoke Detectors
Beautiful Architectural 4 1/4" Base Molding
3" Case Molding Around Doors
3 1/4" Pre-Finished Oak Flooring in Foyer,
Kitchen, and Nook
Shaw® Stain Resistant Carpet and Padding
Jeld-Wen® 2 Panel Arch Top Smooth Doors
Sherwin Williams® Interior Paint-1 Color

Exterior Features

Elegantly Detailed Traditional Elevations
Weather Resistant Electrical Outlets
Concrete Driveways and Walks
Dimensional Shingles and Ridge Ventilation
Architectural Brick Front per Elevation
Coach Lights on Garage
Egress Basement Window
Carved Address Block
Gutters

Bathroom Features

Full Mirrored Vanities with Drawers
Water Saver Shower
Ceramic Tile Bathroom Floors in Baths
Granite Vanity Tops
Delta Faucets
Mansfield China Sinks
Pedestal Sink in Powder Room Per Plan
Courtesy Vent Fans

Inspections

Builder/Client Plan Review
Home Ownership Orientation
Pre-Closing Inspection

Breault Homes

Danielle Grostick

(734)637-5897
Grostick14@aol.com

MEADOWBROOK SUBDIVISION

Built by
Breault Homes
Building dreams one home at a time

In Association
with



OPTIONS:

Selection Interior C or D	\$2,700.00
Lennox/3.5 T Central Air Conditioning	\$3,495.00
Humidifier	\$ 495.00
Waterline to Refrigerator	\$ 125.00
Rough Plumbing Basement (3 piece)	\$ 975.00
Island in Kitchen (3 Ft/4 Ft)-Selection A or B	\$ 995.00/\$1295.00
24" Vanity in lieu of Pedestal	\$ 495.00
Extra Phone/Cable Jacks	\$ 60.00
Service Door in Garage	\$ 495.00
Skylight	\$ 975.00
220V for Stove or Dryer	\$ 250.00
Additional Hardwood Flooring	\$ 10/Sqft.
Automatic Sprinkler System/Sod/Entry way Bushes	\$6,200.00
Ceiling Fan with 2 Switches	\$ 350.00
Recessed Lights	\$ 150.00
Additional Plugs	\$ 125.00
Cabinets in Laundry Area	\$ 449.00
Microwave	\$ 400.00
Appliance Package – Stainless Steel or Black	\$3,500.00
Laundry Sink	\$ 900.00
Shower Door	\$ 300.00
Tile Shower	\$ 1200.00

Breault Homes

Danielle Grostick

(734)637-5897
Grostick14@aol.com

MEADOWBROOK SUBDIVISION

Built by
Breault Homes
Building dreams one home at a time

In Association
with



Homes:

The "Regency"

3 Bedroom Ranch
1330 Sqft.

\$192,900

The "Jenkins-3 Bedroom"

Colonial
1800 Sqft.

\$212,900

The "Brookstone"

3 or 4 Bedroom Colonial
1625 Sqft.

\$202,900

The "Jenkins- 4 Bedroom"

Colonial
2000 Sqft.

\$220,900

Elevation A

Standard

Elevation A

Standard

Elevation B

\$ 1,000

Elevation B

\$ 2,000

Elevation C

\$ 2,000

The "Willow- 3 Bedroom"

Colonial
1650 Sqft.

\$205,900

The "Belmont"

4 Bedroom Colonial
2035 Sqft.

\$222,000

The "Willow - 4 Bedroom"

Colonial
1800 Sqft.

\$212,900

Elevation A

Standard

Elevation B

\$ 2,000

Elevation C

\$ 3,500

Elevation A

Standard

Elevation B

\$ 2,500

The "Brighton"

3 Bedroom Ranch
1310 Sqft.

\$197,900

Breault Homes

Danielle Grostick

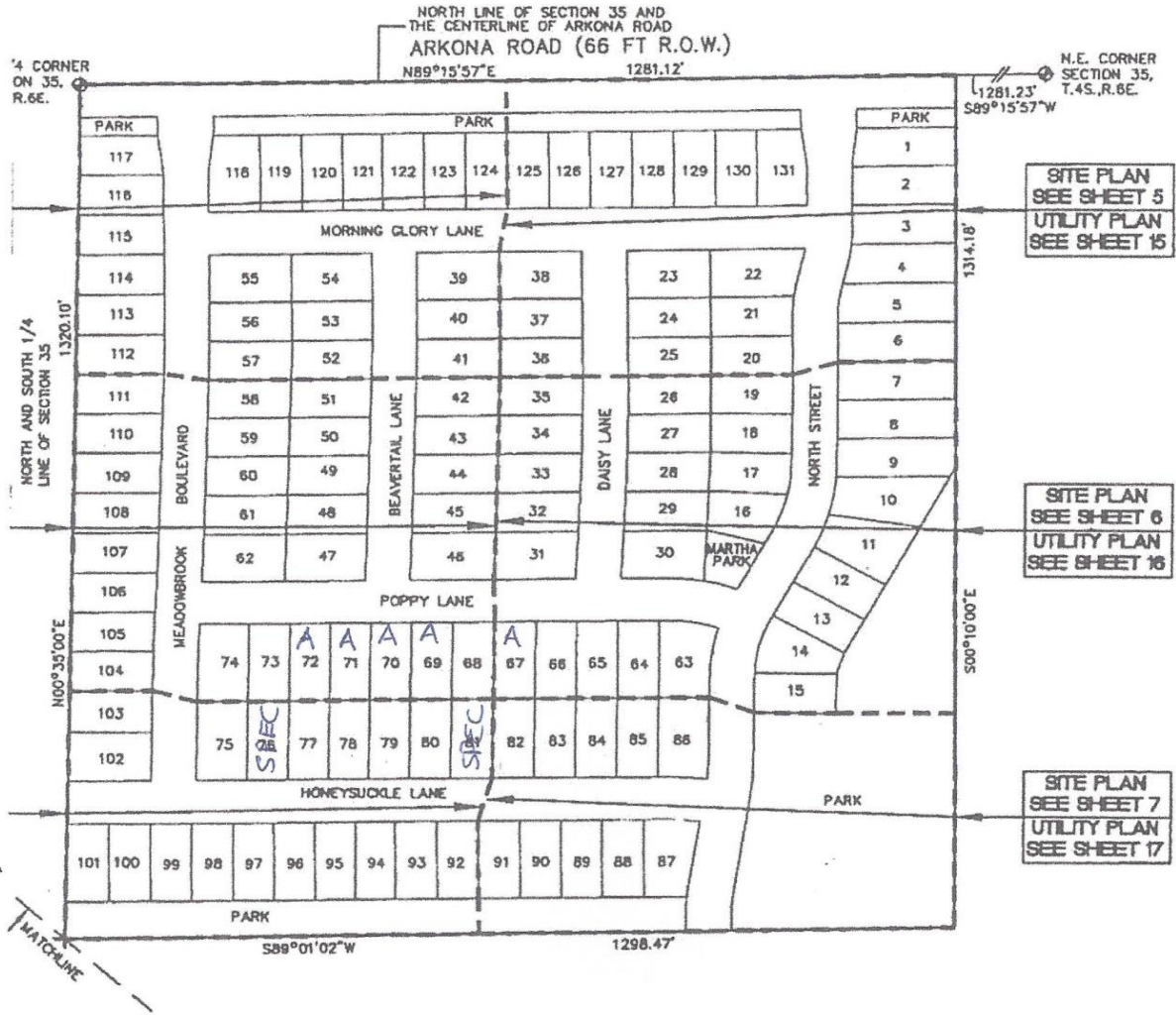
(734)637-5897
Grostick14@aol.com

MEADOWBROOK SUBDIVISION

In Association with



Built by
Breault Homes
Building dreams one home at a time



PROPOSED DATED
JULY 4, 2003

Patricia J. Grant

MEADOWBROOK

Breault Homes

Danielle Grostick

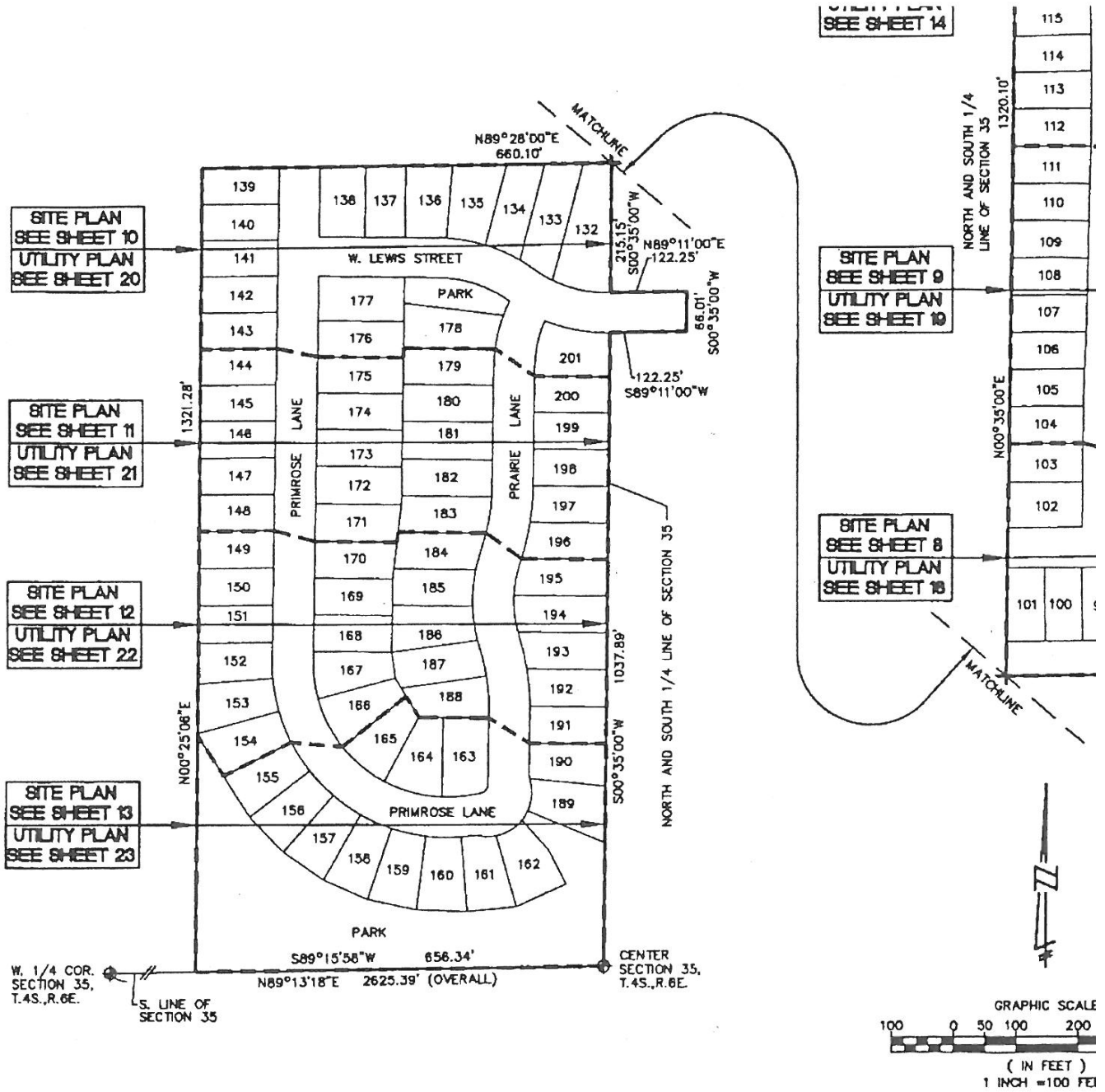
(734)637-5897

Grostick14@aol.com

MEADOWBROOK SUBDIVISION

Built by
Breault Homes
 Building dreams one home at a time

In Association with



Breault Homes

Danielle Grostick

(734)637-5897
 Grostick14@aol.com